

EPIGLU[®]

Adhesion Instead of Sutures

The Ethyl-2-Cyanoacrylate tissue adhesive that also adheres to the mucosa!



The universal tissue adhesive with many different applications in dentistry

Are all tissue adhesives the same?

There are various acrylate tissue adhesives that differentiate by their polymerization and firmness.

EPIGLU®, an Ethyl-2-Cyanoacrylate, not only adheres on the skin but also to the oral mucosa and is approved for use in the dental practice.

Are tissue adhesives more expensive than wound treatment with sutures?

The common opinion that tissue adhesives are generally more expensive than sutures is not the case with **EPIGLU®**. This Ethyl-2-Cyanoacrylate adhesive is available in 3 g-vials and as Single Dose dosettes with 0.3 ml and 0.5 ml. The 3 g-vials are re-usable and as each vial is sufficient for at least 20 wound treatments, the cost per treatment is very economical.

How quickly does EPIGLU® polymerize?

The first layer, which is directly applied onto the wound, hardens in approx. 10 seconds and the wound edges are secured. If necessary a further layer can be applied – thinly smoothed out.

Why is the healing process faster after wound adhesion?

Wounds in the mouth that are treated with **EPIGLU®** are withdrawn from the oral environment – saliva / tongue / food particles – and sealed safely against infection. The healing process is not disturbed and thereby accelerated. There is no record of any allergic reactions.

What you always wanted to know about **TISSUE ADHESIVE** in dentistry!



How long has EPIGLU® been on the market and where is it used?

In December 1995 **EPIGLU®** received authorization and is used in Germany and many other countries. Allergic reactions or other occurrences have not been observed. **EPIGLU®** is used worldwide in all medical fields, from a small cut or laceration to treatment of a long wound after a bypass operation. With **EPIGLU®** even skin meshes and skin substitute material can quickly be adhered without sutures. In many cases sutures can be abstained from due to the tension strength. Sutures also always require a second appointment for the removal of the stitches. After the healing process is completed the adhesive detaches itself.

The many application possibilities in dentistry are shown on the following page.

How is EPIGLU® used in the mouth cavity?

After the area to be treated is blown dry, the adhesive can be applied drop-wise and spread out with the tip of the pipette. With the small, long pipette or the single dose, all regions of the mouth cavity can be reached easily.

EPIGLU® is user-friendly!

Can EPIGLU® be applied on already sutured wounds?

EPIGLU® can still be applied to wounds that have already been treated with sutures. This assists in stabilizing the wound and to protect it against infection.

It is particularly helpful with indolent patients or children when the sutures are smoothly covered with the adhesive.

Why do patients feel better after a wound treatment with EPIGLU®?

Since there are no stitch channels and no pain due to tension, the patient generally has much less pain.

Particularly with the treatment of aphthae many patients reported significantly reduced pain.

What should patients pay attention to after a treatment with EPIGLU®?

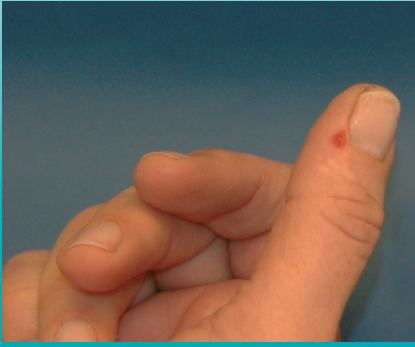
After wound treatment with **EPIGLU®** in the mouth, there is no other attention required than with traditional wound treatment.

How to store EPIGLU®?

The longest shelf life of **EPIGLU®** can be achieved if stored in a deep freezer (3-star freezer compartment). Thereby the vials and the Single Dose dosettes have 24 months shelf life. **EPIGLU®** is high-grade pure and does not freeze into a solid block when stored in the deep freezer. The adhesive can immediately be used after removal from the deep freezer without warming up time.

Can injuries of the practice personnel or doctor also be treated with EPIGLU®?

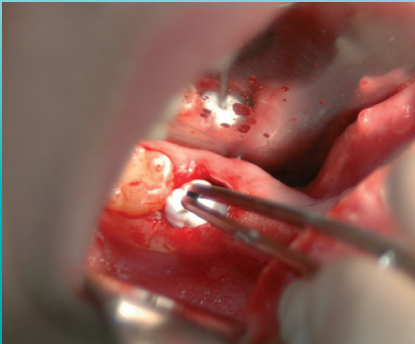
Of course, all injuries can be treated. As long as the wound is not bleeding, not infected and not older than 6 hours. On injuries of the hand an examination glove can be put on immediately after the adhesive has hardened, which would not be possible with treatment with plasters.



To be able to continue working immediately the dentist applied **EPIGLU®** to the wound on the thumb and instantly ran cold water over the area. Thereby the adhesive polymerized immediately and the examination glove could be put on without any problem. The whitening of the adhesive through the dripping of water did not disturb.



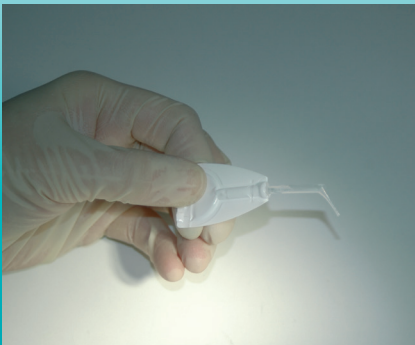
Treating a therapy resistant aphthae ulcer. Immediately after application the patient experiences pain relief. After approx. 4 days the aphthae ulcer has healed in most cases.



After the introduction of a collagen cone in the alveolus the wound area was treated with **EPIGLU®**. The healing process was normal.



A frenulectomy can also be treated with **EPIGLU®** without any disturbing sutures.



In the oral cavity **EPIGLU®** Single Dose can be comfortably used. With an indolent patient the sutures are covered with a layer of adhesive so that the sutures do not disturb the patient.

Dr. Udo Krause-Hohenstein, Recklinghausen, wrote*:

"(...) I have been using, as a matter of routine, **EPIGLU®** (Cyanoacrylate tissue adhesive) in my surgery for many years. Most surgical interventions on the mucosa, as well as on the skin are finally treated with **EPIGLU®**, whether to replace sutures or to stabilize sutures. In all cases the tissue adhesive provides an excellent adaption of the wound edges and seals them from the surrounding environment both chemically and bacterially. The product is characterized by its high adhesive properties both to the skin and the mucosa. The applied liquid hardens under OH-ions to a resistant bandage, so that the wound is not only bacteria resistant but also watertight. In most cases this tight sealing closure will ensure a direct primary wound healing and not, as often the case, via an inflammation (...)"



With a covering of **EPIGLU®** the provisional dentures are not only nice and smooth and shiny, but also more resistant to breakage. Repairs can be made to the model or directly in the mouth.

* Upon request we can send you the complete PDF document per E-Mail. Please contact: export@meyer-haake.com

EPIGLU®-Packaging forms



FOR DOCTORS AND DENTAL PRACTICES

EPIGLU® tissue adhesive in 3 g-vials with application aids
(Various pack sizes are available)

CE 0482



FOR THE OPERATION ROOM IN HOSPITALS AND PRIVATE PRACTICES

EPIGLU® tissue adhesive 3 g-vial and 20 sterile application sets

CE 0482



FOR SINGLE USE IN PRIVATE AND DENTAL PRACTICES

EPIGLU® tissue adhesive Single Dose dosettes with 0.3 ml or 0.5 ml content
(Various pack sizes are available)

CE 0482

EPIGLU® is a registered trademark of the Meyer-Haake GmbH Medical Innovations.

EPIGLU®

The solution for effective wound treatment
in practices, emergency rooms and the operating theatre

Manufacturer:



Meyer-Haake GmbH
Medical Innovations
Daimlerstr. 4 · 61239 Ober-Moerlen
Deutschland/Germany

Phone ☎: +49 (0)60 02 992 70-0
Telefax 📠: +49 (0)60 02 992 70-22
E-Mail: export@meyer-haake.com
Internet: www.meyer-haake.com

Distributor:

