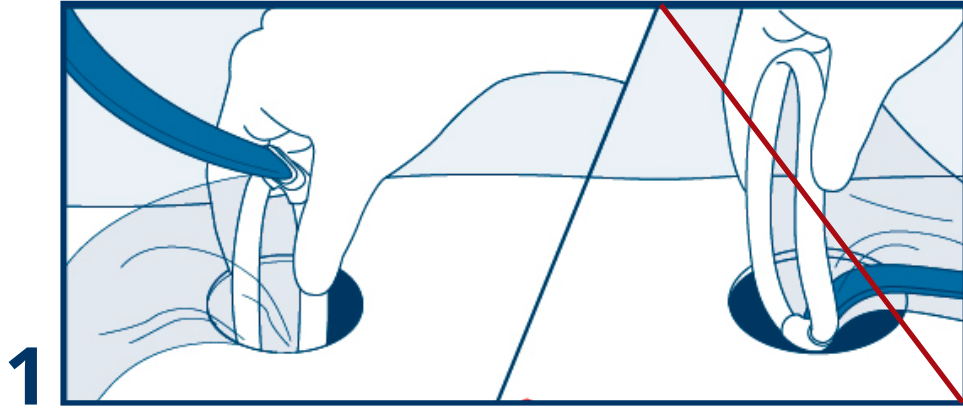


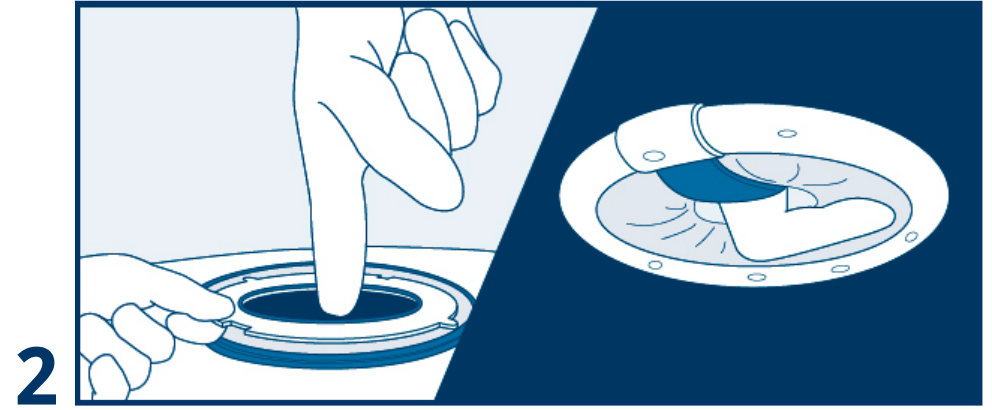
# HOW TO USE **JACK** Multichannel Superior Access Port

Before using the product, check cleanliness and sterility.

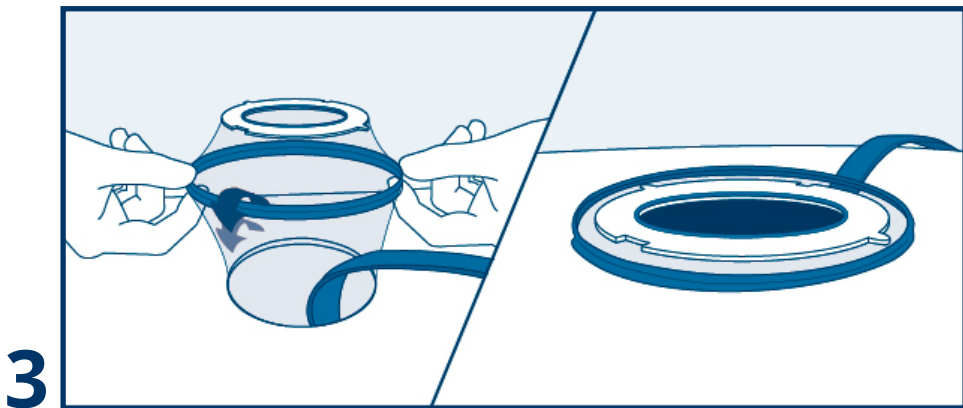
Start by cutting through the layers of tissue. Incision length of the fascia: JACK small 2 - 5 cm, JACK medium 2 - 7 cm.



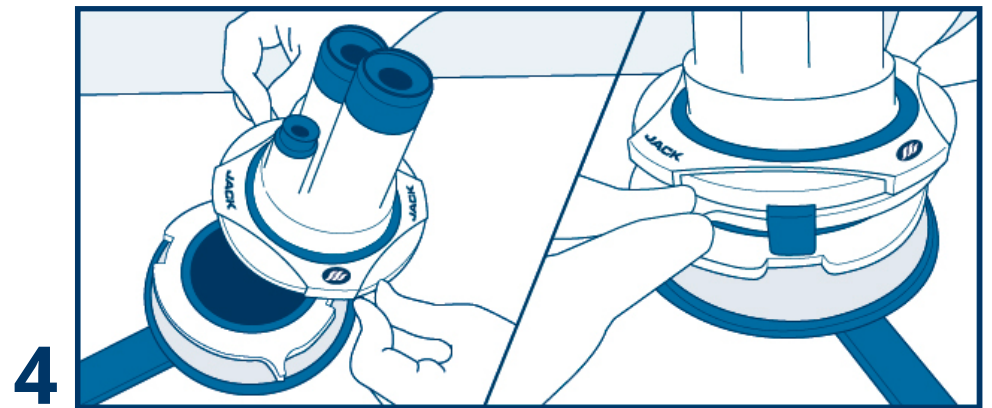
**1** Squeeze the inner ring of the wound protector and insert it through the incision into the abdominal cavity as shown in the left picture. Do not insert the smart tubing first, as shown on the right picture.



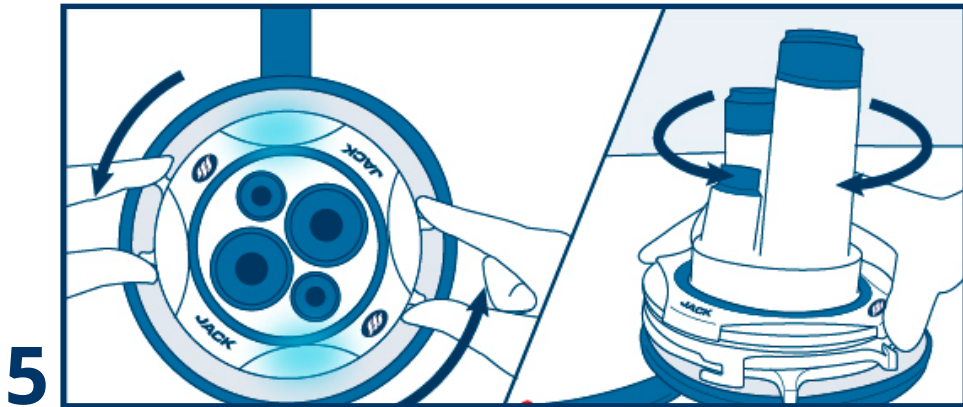
**2** Check with your finger whether the inner ring has been placed intra-abdominally.



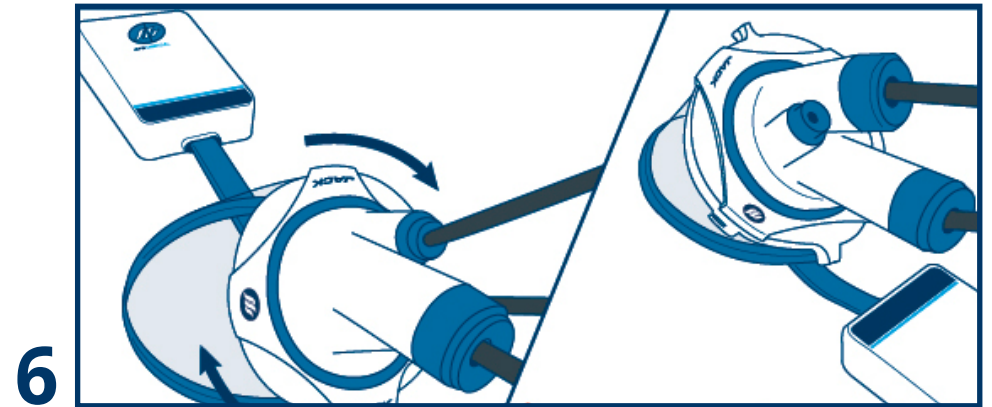
**3** Roll the retractor ring inwards or outwards until the wound protection film is stretched evenly and the retractor ring rests firmly against the abdominal wall. Ideally use 4-hand-mode for rolling the retractor ring.



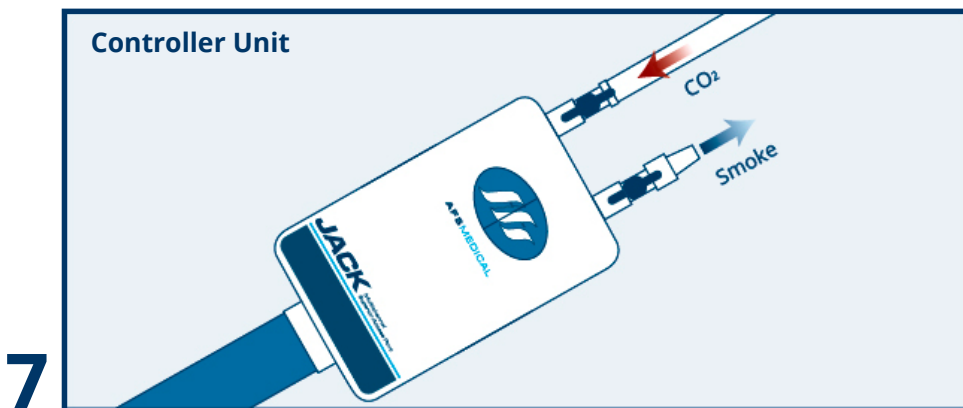
**4** Hold the handle on the port head and combine the port head and the wound protector as shown. Connect both rings in the intended position and lock them by rotating with fingers.



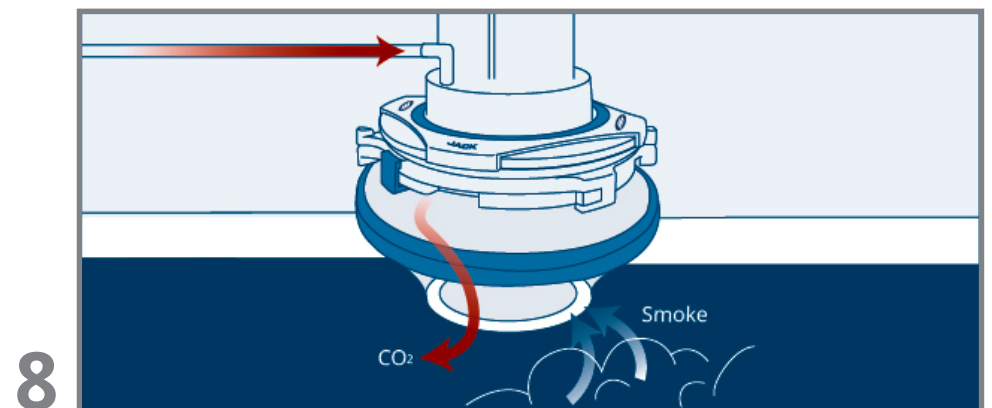
**5** When the blue LED light comes on, the connection is correct and the system is gas-tight. The Port head can still be rotated without gas loss, to facilitate insertion of instruments.



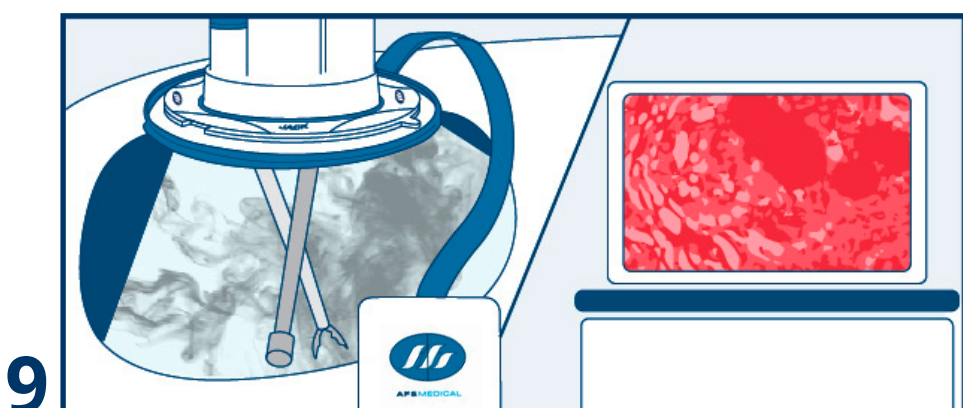
**6** Turn the controller unit in the opposite side of the surgeon, so that the smart tubing is not pressed by the retractor ring. Then rotate the port head for ideal instrument position.



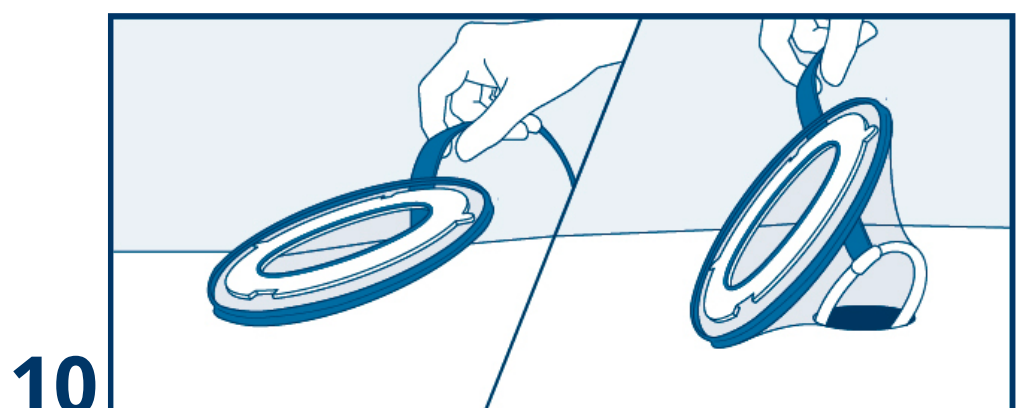
**7** Connect the CO<sub>2</sub> gas insufflation to the valve on the controller unit. In case of smoke, open the valve or connect a smoke evacuator.



**8** Optionally, you can connect the CO<sub>2</sub> gas insufflation directly to the port head with the valve supplied separately in the packaging.



**9** The LED light can be switched on to achieve better illumination of the abdominal cavity. The switch is located on top of the controller unit and consists of two parts. The LEDs on the inside and outside of the inner ring can be turned on and off separately.



**10** To remove the device after use, lift up the smart tubing and pull the inner ring out of the incision. After use, dispose of the device following hospital policy. Batteries can be removed by breaking the cover of the controller unit.